

GENERAL INFORMATION

ERF INFORMATION

- Erf number = 14862
- Erf size = 2431.9m²
- Area of jurisdiction = Wellington
- Permitted coverage = 70%
- Actual coverage:
- Existing Building = 139.8m²
- Block A2 = 120.7m²
- Block B3 = 100.4m²
- Block B1 = 96.2m²
- Roofing on columns = 316.5m²
- Block A1 = 317.1m²
- Block B2 = 317.1m²
- Total Coverage = 1590.2m² @ 44.86%
- Current Zoning = General Business
- Bulk Factor = 0.55

AREAS

GROUND FLOOR

- Existing building = 139.8m²
- Block A2 = 120.7m²
- Block B3 = 100.4m²
- Block B1 = 96.2m²
- Roofing on columns = 316.5m²
- Block A1 & A2 walkway = 77.2m²
- Block B2 = 317.1m²
- Block B3, B2 & B1 walkway = 85.0m²
- Total area = 1324.4m²
- Refuse area = 24.3m²
- Drying yard = 28.7m²
- Type C apartment = 2 units
- Type D apartment = 1 unit
- Type E apartment = 1 unit
- Total Apartments = 4 units

Total area of buildings:

- Existing building = 139.8m²
- Block A1 = 633.0m²
- Block A2 = 241.4m²
- Block B3 = 200.8m²
- Block B2 = 633.6m²
- Block B1 = 192.4m²
- Walkways = 350.3m²
- Total = 2421.3m²

PARKING

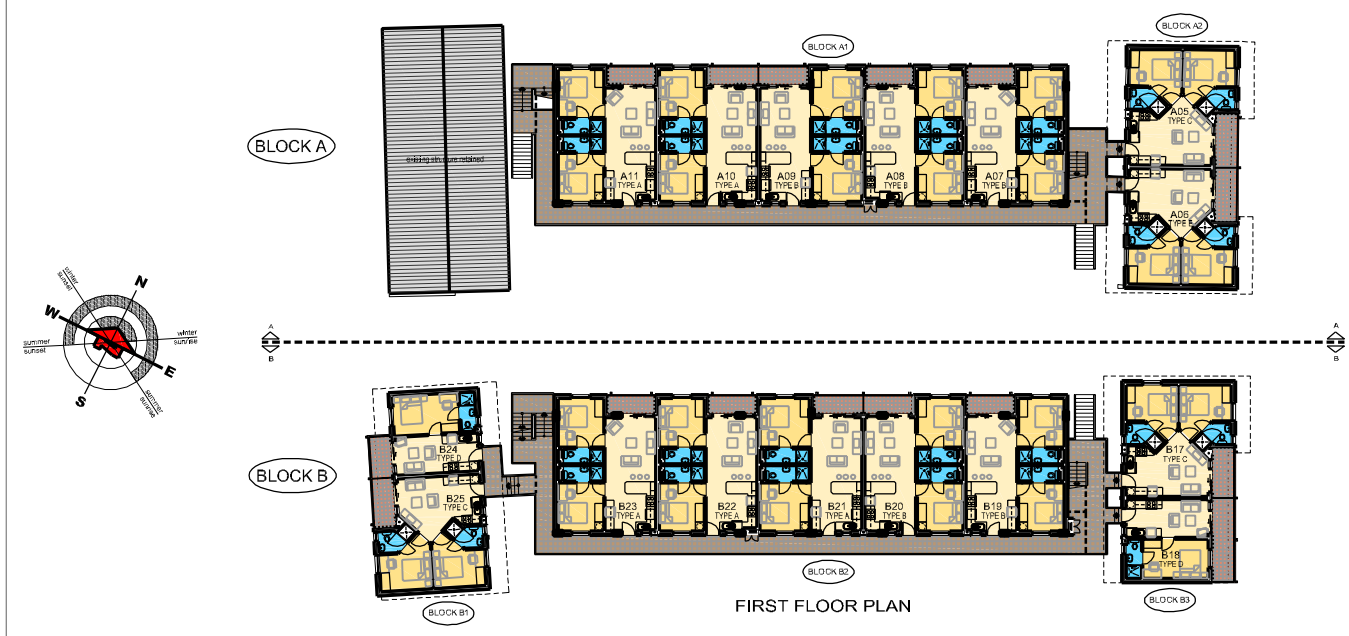
BLOCK A1 PARKING AREA

- Residents = 14 bays
- Visitors = 14 bays
- Total = 28 bays
- Area = 699.01m²

BLOCK B2 PARKING AREA

- Residents = 16 bays
- Visitors = 4 bays
- Total = 20 bays
- Area = 485.14m²

Total parking provided = 48 bays
Parking required = 37.5 bays @ 1.25/unit



GENERAL INFORMATION

AREAS

FIRST FLOOR

- Block A1 = 316.5m²
- Block A2 = 120.7m²
- Block B3 = 100.4m²
- Block B2 = 317.1m²
- Block B1 = 96.2m²
- Block B3, B2 & B1 walkway = 85.0m²
- Total area of buildings = 1113.7m²
- Type A apartment = 5 units
- Type B apartment = 5 units
- Type C apartment = 3 units
- Type D apartment = 2 units
- Type E apartment = 1 unit
- Total Apartments = 16 units



GENERAL INFORMATION

AREAS

SECOND FLOOR

- Block A1 = 316.5m²
- Block B2 = 63.2m²
- Block B3 = 316.5m²
- Block B1 = 61.4m²
- Total area of buildings = 757.6m²
- Type A apartment = 5 units
- Type B apartment = 5 units
- Total Apartments = 10 units



APARTMENTS

FLOOR PLANS
SCALE 1:250 on A1
SCALE 1:500 on A3

REFER TO SITE PLAN FOR ACCURATE ORIENTATION OF DWELLING
FURNITURE AND FITTINGS FOR ILLUSTRATIVE PURPOSES ONLY AND ARE NOT PART OF THIS CONTRACT.

PROJ. No. AX 08.006
DATE 24/11/2009
Telephone (021) 914 8870
Fax (021) 914 3237